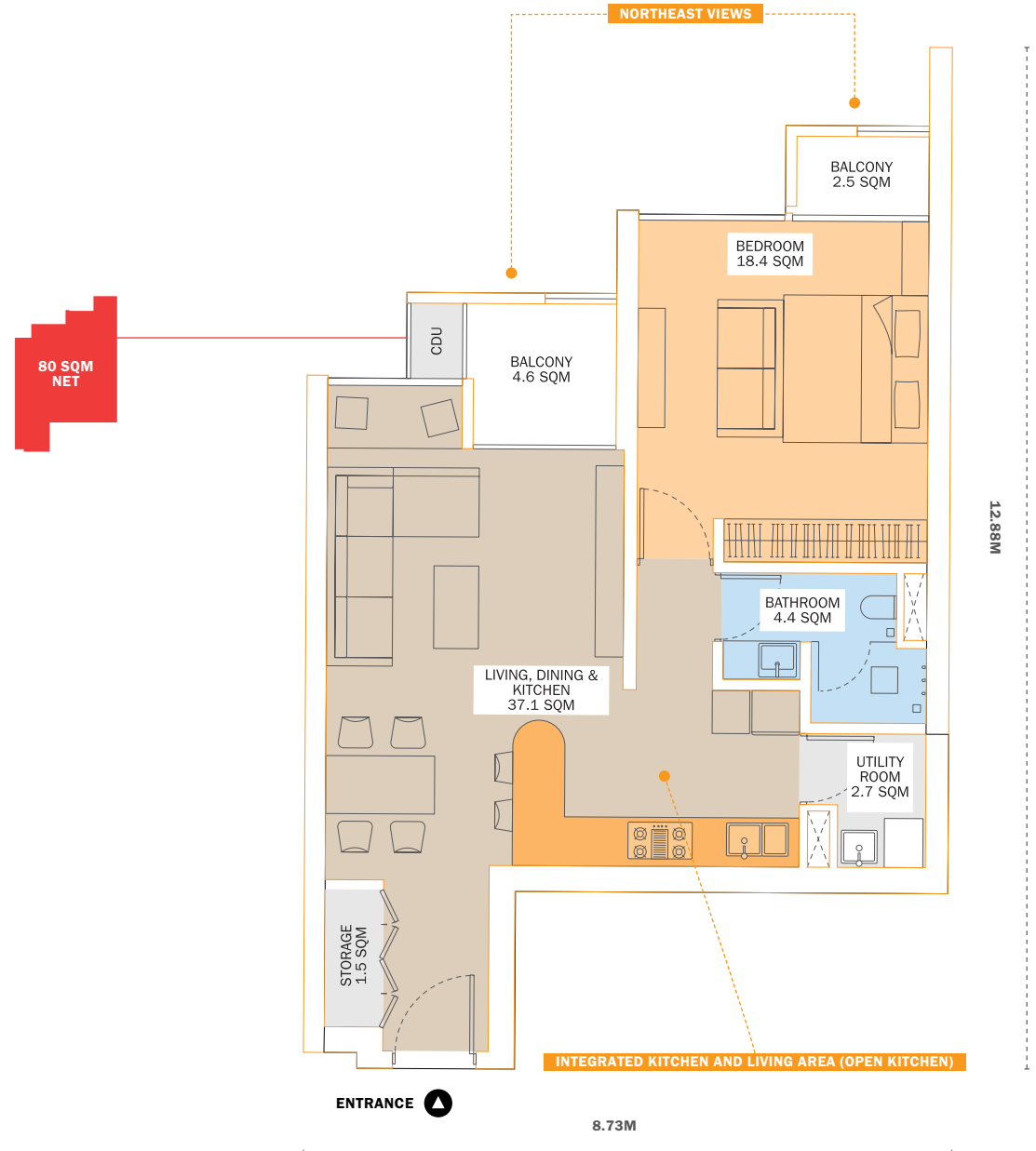


# 1B

## OPEN KITCHEN 80 SQM (NET)

Designed for city dwellers, young professionals and long-term expats who enjoy cooking and want to share the experience with their guests. The 1B is a comfy nest perfect for unwinding and recharging after a busy day.



**Net SQM Calculation** Net calculation is based on the perimeter red line as indicated.  
**Room Areas** Measurements for rooms are approximate only and calculated based on expected usable space, excluding walls and extrusions. Room spaces will total less than the total NET space. Please refer to dimensions or drawings provided for the unit with the SPA.  
**Variance** These drawings represent conceptual layout before final engineering stage and are subject to change based on regulatory or technical requirements.

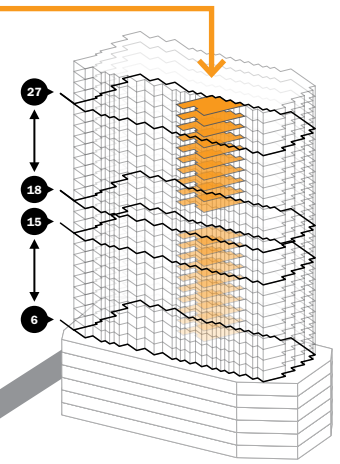
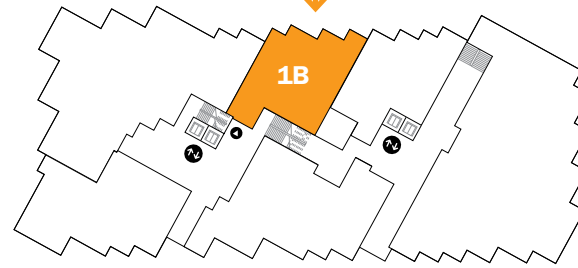


# 1B

## OPEN KITCHEN 80 SQM (NET)

1B homes face northeast but receive more shade from Odom Tower and have views of the Mekong to the east.

N  
▲  
NORODOM BLVD



## AMENITIES

### EQUIPPED KITCHEN\*

- 4-plate electric stove
- Electric hood
- Oven
- High-quality sink

\*Refrigerator not included

### DESIGN-FOCUSED BATHROOMS

- Glass-doored shower
- Sink
- Vanity
- Toilet
- Naturally ventilated bathroom
- 1 shower, 1 toilet, 1 basin

### COMFORTS THROUGHOUT THE HOME

- Living room balcony
- En suite bedroom balcony
- Large bay window in the living area
- Energy-efficient AC units in living areas and bedrooms
- Parquet flooring in bedrooms, Living and Dining areas
- Beautifully tiled floors in Kitchen areas
- Ceiling fans



BEDROOM VIEW OF THE 1 BEDROOM "B" STYLE