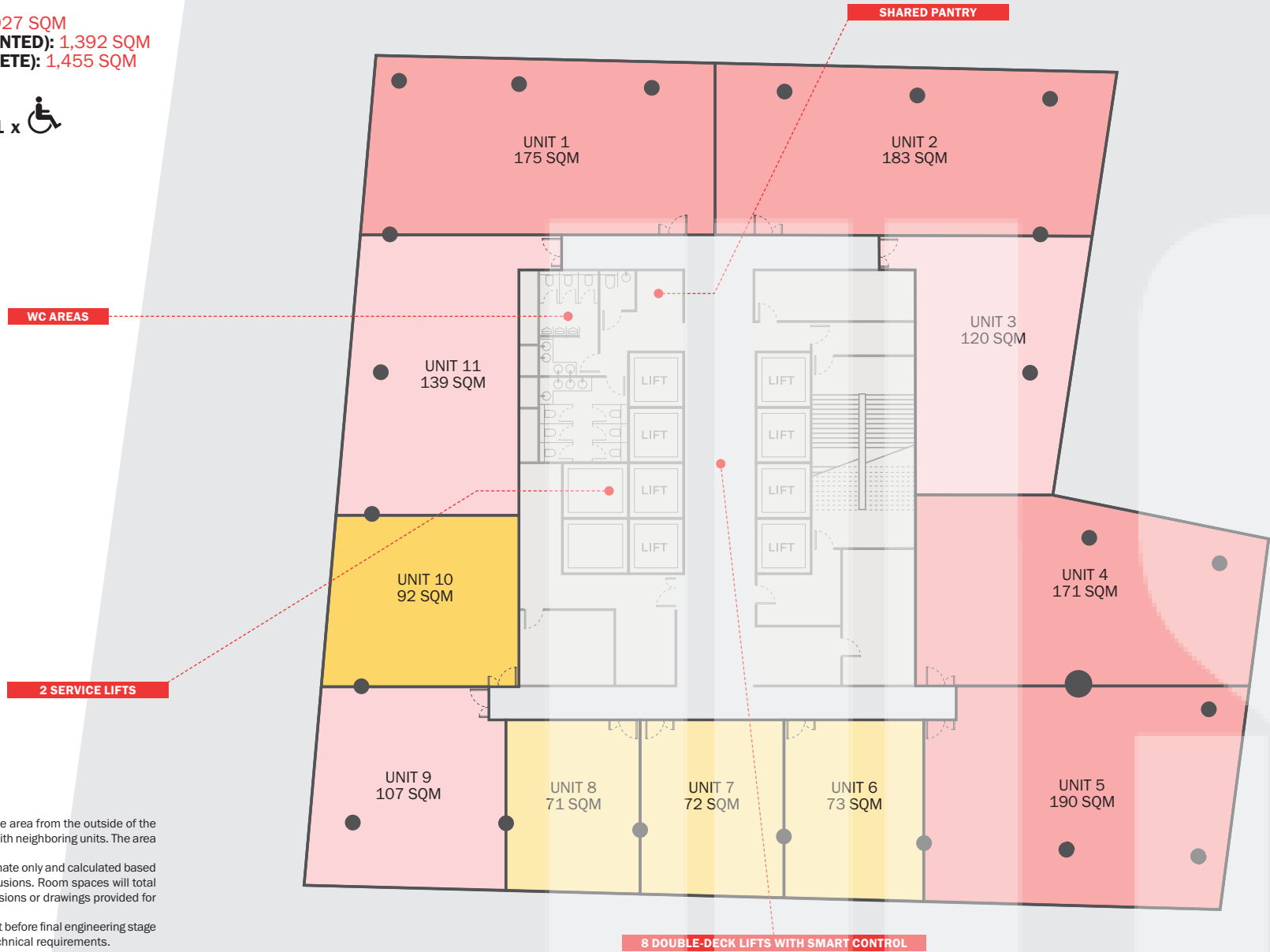


# F14

TOTAL FLOOR AREA (GROSS): 1,927 SQM  
 TOTAL FLOOR AREA (NET SEGMENTED): 1,392 SQM  
 TOTAL FLOOR AREA (NET COMPLETE): 1,455 SQM

6 x 3 x 3 x 8 x 1 x



**Net SQM Calculation** Net calculation is based on the area from the outside of the perimeter walls and from the center of shared walls with neighboring units. The area includes the footprint of the columns.

**Offices Areas** Measurements for rooms are approximate only and calculated based on expected usable space, excluding walls and extrusions. Room spaces will total less than the total NET space. Please refer to dimensions or drawings provided for the unit with the SPA.

**Variance** These drawings represent conceptual layout before final engineering stage and are subject to change based on regulatory or technical requirements.



## SIZE SQM



ODOM LIVING

# F14

Views from the 13th floor as of August 2020.



NORTH VIEW



SOUTH VIEW



EAST VIEW

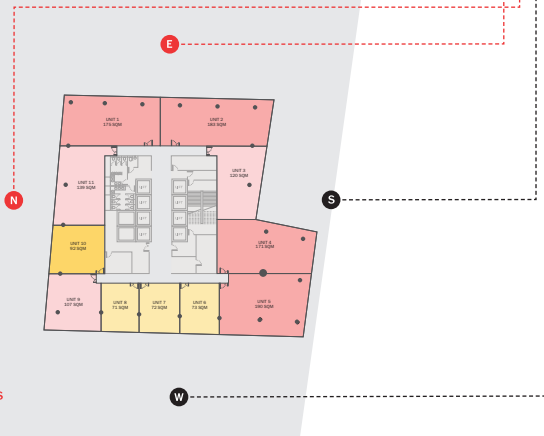


WEST VIEW



ODOM LIVING WILL BE CONSTRUCTED JUST TO THE SOUTH OF ODOM TOWER. OFFICES ON THE SOUTH SIDE WILL LOOK OUT ONTO THE RESIDENCE.

ODOM BUYERS CAN WORK WITH THE INTERIOR DESIGNER OF THEIR CHOICE TO DESIGN THE PERFECT OFFICE SOLUTION. ABOVE IS ONE OF THE LAYOUT OPTIONS PROPOSED FOR THE VERSATILE OFFICE SPACES AVAILABLE AT ODOM FOR COMPANIES OF ALL SIZES.



## BUILDING FEATURES

- Smart lift system with two lifts per shaft
- 24-hour access and security
- Reception from 8:00am-7:00pm
- Rooftop members club
- Free wi-fi in the main Odom Tower lobby
- Bicycle parking and shower facilities

## ASSOCIATED FEES

- Management Fee \$3/SQM
- Electricity \$0.25/kWh

## OFFICE SPACES

- Raised floors (wiring and services underneath)
- Metered electrical services
- Air-Conditioning ready
- Shared pantry and kitchenette on every floor
- Disability-accessible bathroom
- Buyer fits & finishes

## NEAREST SKY VILLAGE:

- ↑ Floors 15-18
- ↓ Floors 10-13